



RANGE SAFETY MANUAL

June 11th, 2025

PURPOSE STATEMENT

Listed herein are various rules and regulations to assure personal and group safety, the orderly operation of Pima Pistol Club and provide for the promotion of recreational shooting sports as well as training and education.

The general safety rules of the National Rifle Association (NRA) are hereby adopted if they do not conflict with the rules contained herein, the bylaws of Pima Pistol Club or official documents published by Pima Pistol Club.

During matches with national organization affiliation, the rules of that national organization must be applied if they do not conflict with Pima Pistol Club rules. In the event of any conflict, the rules of Pima Pistol Club will apply.

Violation of any one or more of the rules can result in disciplinary action being taken by Pima Pistol Club. Additionally, any person who exhibits by his/her behavior that they are an immediate and/or continuing safety hazard, either as a participant or observer, may be ordered to leave the premises by the on-duty Range Safety Officer. Failure to comply will result in law enforcement being called and an official report filed. Criminal Statutes -Title 13-1502 Trespassing by refusing to leave; Title 13-2904 Reckless use of firearm; 13-2908 Recklessly creating unsafe conditions will be cited.

TABLE OF CONTENTS

1-	<u>Universal Rules Of Firearms Safety</u>	4
2-	<u>Firearms Handling & Transportation on the Range</u>	5-7
2.1-	<u>Peace Officer Exception</u>	7
3-	<u>Range Rules</u>	8-20
3.1-	<u>General Range Rules</u>	8-13
3.1.8-	<u>Steel Targets</u>	9
3.1.9-	<u>Prohibited Items and Actions</u>	9-10
3.1.10-	<u>Range Use, Setup and Cleanup</u>	10-12
3.1.11-	<u>Shotguns</u>	12
3.1.12-	<u>Range Safety Officers</u>	12-13
3.2-	<u>Policy on Children Under 18</u>	14-15
3.3-	<u>Match Requirements</u>	16-20
4-	<u>Control of the Firing Line</u>	21-24
5-	<u>Range Specific Rules</u>	25-41
5.1-	<u>Range 1</u>	26-27
5.2-	<u>Range 2</u>	28-30
5.3&4-	<u>Range 3&4</u>	31
5.5ABC-	<u>Range 5A, B, C</u>	32
5.5D-	<u>Range 5D</u>	33-34
5.6-	<u>Range 6</u>	35
5.8-	<u>Range 8</u>	36
5.9-	<u>Range 9</u>	37
5.10-	<u>Range 10</u>	38
5.11-	<u>Range 11</u>	39
5.12-	<u>Range 12</u>	40
5.200-	<u>200 Yard Range</u>	41
FAQ		42

SECTION 1
UNIVERSAL RULES OF FIREARM SAFETY

1.1- Always keep the gun pointed in a safe direction.

1.2- Always keep your finger off the trigger until ready to shoot.

1.3- Treat all guns as though they are loaded.

1.4- Know your target and what is beyond it.

SECTION 2

FIREARMS HANDLING & TRANSPORTATION

- 2.1- PPC operates as a cold range. A cold range does not allow uncased or holstered carry of loaded or unloaded firearms in common areas and public range bays.
- 2.2- All firearms must be unloaded and transported in a case, bag, or cart until arrival at the assigned range bay.
- 2.3- Unloaded condition for handguns in holsters is with the hammer or striker fully down on an empty chamber or cylinder, with no magazine inserted.
- 2.4- Unloaded condition for handguns outside of holsters is with the slide locked to the rear, empty chamber or cylinder, with no magazine inserted.
- 2.5- Unloaded condition for rifles is with the magazine removed, bolt locked back to the rear or removed.
- 2.6- A firearm is considered loaded if:
 - 2.6.1- A cartridge or brass casing is chambered or inside the magwell or action of the gun in any condition (such as after a malfunction).
 - 2.6.2- A magazine or other ammunition feeding device is inserted into the firearm even if the ammunition feeding device is empty.
 - 2.6.3- A shotgun with a shell held in the matchsaver is not considered a loaded firearm.

SECTION 2

FIREARMS HANDLING & TRANSPORTATION

- 2.7- Case and uncase firearms at the firing line bench or safe area only.
- 2.8- NEVER handle any uncased firearm away from the firing line on public ranges or on member ranges. **NO HANDLING OF FIREARMS IN THE PARKING LOT AREAS.**
- 2.9- Always uncase firearms with the muzzle already pointed down range.
- 2.10- Absolutely NO ammunition is allowed in the classrooms during training. No handling of ammunition in range safety areas.
- 2.11- Loaded firearms are only permitted on the firing line during hot range periods when firing is permitted.
- 2.12- During cold range periods, all firearms must be benched, unloaded and pointed downrange. For public ranges, empty chamber indicator flags must be inserted into the chamber.
- 2.13- For Range 2, if a range user has more than one long gun, long guns not in use must be placed in racks, muzzle pointing up, unloaded and with chamber flags inserted into the chamber, or in a case unloaded. For member-only ranges, long guns not in use must be unloaded and cased or placed on the bench unloaded and pointing downrange.

SECTION 2

FIREARMS HANDLING & TRANSPORTATION

2.14- During all cold range periods, all range users **MUST** remain behind the **yellow** safety line or in front of the **red** firing line.

2.15- No handling of firearms or accessories located on the shooting benches or between the **yellow** and **red** lines is allowed during cold range periods.

2.16- **Peace Officer Exception** - Sworn local, state, and federal peace officers who are “ON-DUTY” under HR-218 may arrive with loaded and holstered handguns. Any individual fitting this criterion must identify themselves with the on duty RSO upon entrance to the facility.

2.16.1- In the case of a match the Peace Officer is to seek out the MD/RO/RSO who will direct them to a safe point down range to return the firearm to an unloaded state. Upon completion of the match they may reload the firearm, only under the direct supervision of the MD/RO/RSO

2.16.2- At any time on a public firing line, the Peace Officer must wait for a Hot range condition before removing the loaded firearm from the holster and before reloading the firearm at the termination of the range session.

SECTION 3.1

GENERAL RANGE RULES

3- Range Rules

3.1- General Rules

3.1.1- Anyone who violates any of the rules herein is personally responsible for all damage to property and/or personal injury.

3.1.2- The public ranges are Range 1 (10-15 yard pistol range) and Range 2 (25-100 yard rifle range). All other ranges are members-only.

3.1.3- Holsters and drawing from a holster are authorized on member ranges only.

3.1.4- Only strong-side holsters or appendix holsters (outside the waistband or inside the waistband) with a zero vertical cant are allowed. No other holsters are permitted to include but not limited to shoulder holsters, purse holsters, cross-draw holsters, Small of the Back (SOB), fanny pack holsters, ankle holsters, pocket holsters, Blackhawk Serpa-style, Yaqui slide holsters, undergarment body holsters, or jacket holsters. Firearms with disabled safety devices are prohibited. Holsters or clips that do not cover the trigger guard are prohibited.

3.1.5- Know your specific firearms and target systems.

3.1.6- Always wear eye and hearing protection while at Pima Pistol Club range.

SECTION 3.1

GENERAL RANGE RULES

3.1.7- Always keep the muzzle pointed in a safe direction. All uncased & unloaded long guns not in use must be pointed at the berm or in a vertical direction. Pistols must be pointed at the berm, bagged or holstered.

3.1.8- Steel Targets

3.1.8.1- Shooting pistol steel targets at less than 7 yards, and rifle steel targets at less than 25 yards, is prohibited.

3.1.8.2- Pima Pistol Club provides steel targets to its members. All steel targets are for pistol calibers only. Only PPC steel marked with "Rifle Rated" can be shot with rifle calibers.

3.1.8.3- Approved steel targets must be placed close to the berm in a manner to safely control any ricochets.

3.1.8.4- Always inspect berm areas and steel targets for functionality and stability before using. Shooting steel targets is inherently dangerous and always comes with certain risks. When shooting steel, the shooter accepts this risk but should work to always minimize it.

3.1.9- Prohibited Items and Actions

3.1.9.1- .50 BMG, .416 Barrett, or any cartridge with the muzzle energy on par with the .50 BMG or greater, tracer rounds, incendiary, armor piercing or exploding rounds.

SECTION 3.1

GENERAL RANGE RULES

- 3.1.9.2- Consumption or possession of beverages containing alcohol, ingestion of illegal drugs, or use of prescription medication causing disorientation and/or drowsiness prior to or during range use is prohibited. Violators will be denied access to or ejected from the premises. If the violation appears to also be a violation of statutory laws, law enforcement officials will be notified.
- 3.1.9.3- Bump fire stocks, bump firing, binary triggers, burst fire, fully automatic firearms and similar devices are NOT allowed.
- 3.1.9.4- Never point a firearm up range or break the 180-degree rule.
- 3.1.9.5- Firing at any wildlife on the range is not permitted under any circumstance.
- 3.1.9.6- Only service dogs or law enforcement K-9's are allowed on the ranges. "Comfort" or pet dogs are not considered to fall within the realm of being a service dog. All dogs must always be on a leash and controlled by their owners. Owners must immediately clean up after their pets.
- 3.1.10- Range Use, Setup and Cleanup**
- 3.1.10.1- All target stands, steel targets, and props must be returned to the storage locations they were taken from.

SECTION 3.1

GENERAL RANGE RULES

3.1.10.2- Targets must be placed in such a manner that rounds will not go over the berms either directly or by ricochet

3.1.10.3- Set up all target stands so that the rounds will hit the berm safely from the midpoint of the berm down to the floor of the range. The rounds must NOT skip off the floor of the range or go over the berm. The shooter is responsible for all their shots.

3.1.10.4- Range users must ensure that all firearms are safe and that the range is clear before going down range.

3.1.10.5- Range users must never handle a firearm when someone is down range of them.

3.1.10.6- All Shots must be taken from within the range bay area.

3.1.10.7- If upon arrival, a range user notices an unsafe or unsatisfactory range condition, they must notify the Range Safety Officer before using that range.

3.1.10.8- Loaded firearms must always be pointed at the berm downrange or holstered with proper safety engaged for pistols.

SECTION 3.1

GENERAL RANGE RULES

3.1.10.9- It is the shooters responsibility to clean up their shooting position. This means picking up empty casings including brass, steel, and shotgun shells. Brass should be placed in brass cans and discarded items in the trash.

3.1.10.10- Only PPC approved targets, target stands or personally owned targets and stands that have been approved by an On-Duty Range Safety Officer are allowed. Personally owned equipment must be approved EVERY TIME it is going to be used on PPC ranges

3.1.11- Shotguns

3.1.11.1- Shotguns can be fired at targets on target stands ONLY when firing slugs.

3.1.11.2- Shotguns firing shot may be function tested only. They may not be fired at any PPC target stands or targets. Range users can bring their own target stands for use but must be approved by the RSO.

3.1.12- Range Safety Officers

3.1.12.1- When unsafe conditions or unsafe actions are observed by anyone on the range, the Range Safety Officer must be notified immediately.

3.1.12.2- All participants and observers must obey the instructions of the Range Safety Officer.

SECTION 3.1

GENERAL RANGE RULES

3.1.12.3- Range Safety Officers are authorized to carry loaded firearms on PPC property.

3.1.12.4- In the event of any dispute, the decision of the on-duty Range Safety Officer is FINAL

SECTION 3.2

POLICY ON CHILDREN UNDER 18

3- Range Rules

3.2- Children Under 18

3.2.1- Children under 6 years old may not be on PPC property.

3.2.2- All children must always be supervised, regardless of whether they are actively shooting.

3.2.3- Children 6-9 may only shoot rimfire calibers .22LR and smaller under direct adult supervision.

3.2.4- Children between 6-17 years old always shoot free at PPC except classes.

3.2.5- Children 8-10 may compete in any competition at PPC that allows .22LR caliber firearms under direct adult supervision.

3.2.6- Children 10 and older may compete in all competitions under direct adult supervision.

3.2.7- Children 10 and older may shoot rimfire and centerfire firearms with direct adult supervision.

3.2.8- Supervising adults must be over 18 and must be a blood relative, stepparent, or legal guardian of the child.

3.2.9- All supervising adults must complete a waiver accepting responsibility and liability.

SECTION 3.2

POLICY ON CHILDREN UNDER 18

- 3.2.10- At least two supervising adults are required when bringing two or more children under the age of 10.
- 3.2.11- Only one child may shoot at a time per supervising adult.
- 3.2.12- While a child is shooting and handling loaded firearms, the supervising adult must be within arm's reach of the child and may not also be shooting.
- 3.2.13- During matches, the squad RO, if different than the supervising adult, cannot be responsible for supervising the child.
- 3.2.14- Youth and Instructor user groups with current user agreements are excluded from 3.2.3, 3.2.5, 3.2.6, 3.2.7, 3.2.8, 3.2.10, 3.2.11, 3.2.12, and 3.2.13 during user group events and activities.

SECTION 3.3

MATCH REQUIREMENTS

3- Range Rules

3.3- Match Requirements

3.3.1- **If a nationally affiliated match contains a rule that is safer than a rule in this section, then the match rule takes precedence.** Violation of these requirements can result in a warning or match disqualification. Match Director ruling takes precedence. Severe safety violations can result in club disciplinary action.

3.3.2- Match participants may not arrive at Pima Pistol Club with loaded firearms. All firearms must be unloaded until the match participant is under the supervision and direct command of a Range Officer.

3.3.3- Except when the match participant is under the supervision and direct command of a Range Officer, all long guns must be in a case, bag, or cart with a chamber flag inserted. If the long gun is in a cart, the muzzle must be pointed no more than 3 feet from the cart.

3.3.4- A bagging/un-bagging/staging area must be provided for every stage or shooting bay. This area may take the form of a rack or table or both. All firearms in the staging area must have their actions locked open and have chamber flags inserted with the bolt closed on them or be cased/bagged. This area may be used for holstered or cased/bagged handguns

SECTION 3.3

MATCH REQUIREMENTS

3.3.5- Except when the match participant is within the boundaries of a designated safe area, or under the supervision and direct command of a Range Officer, handguns may not be unholstered or unbagged.

3.3.6- Long guns may not be carried into a restroom. Holstered handguns may be carried into a restroom but may not be removed from the holster. No ammunition is allowed in a restroom.

3.3.7- Match participants may carry Appendix Inside Waistband (AIWB) if a holster is used.

3.3.8- During the day of the match, match participants may not loiter with unloaded holstered handguns on Range 1 and 2 or their associated parking lots. Match participants may have unloaded holstered handguns in the MPR and at the RSO shack.

3.3.9- Match participants may not retrieve long guns from their vehicles uncased unless they are putting an unloaded long gun directly into a cart.

3.3.10- During a “Load and Make Ready”, match participants must maintain visual line-of-sight of the firearm and holster when holstering a loaded handgun and must clear any potential holster obstructions.

SECTION 3.3

MATCH REQUIREMENTS

3.3.11- All function checks, sight adjustments, cleaning, disassembly, reassembly, and fixing of equipment issues must be done in the designated safe area. If a firearm malfunction leaves the firearm in a loaded state, requires disassembly and/or tools to fix, and cannot be fixed at the firing line in a reasonable amount of time, the match participant must transport the firearm (muzzle down if long gun, and holstered if handgun) to an empty bay and fix the malfunction there. If an empty bay is not available, the match participants may use a designated safe area under RO supervision. If the match competitor cannot fix the malfunction, then they must transport and stow the firearm (same transport methods as previously mentioned) in their vehicle.

3.3.12- Match participants may not handle live ammunition in the designated safe area, unless clearing a malfunction.

3.3.13- If a range-provided safe area is not present at the stage, the RO may designate an area within 6 feet of a side berm as the designated safe area.

3.3.14- If the match participant is not “On Deck” or under the supervision and direct command of a Range Officer, or in a designated safe area, match participants will refrain from handling long guns. Any slinging, carrying, and handling of uncased, unloaded, and flagged long guns must be done with the muzzle reasonably oriented in a vertical direction (muzzle up or down).

SECTION 3.3

MATCH REQUIREMENTS

3.3.15- Match participants are not required to check-in at the RSO shack when arriving at PPC. The Practiscore registration serves as the sign-in roster for matches.

3.3.16- Match participants may not use any ammunition that contains steel or tungsten in the bullet when shooting steel targets, except for bimetal jacketed bullets.

3.3.17- Steel targets are not allowed on Ranges 5A and 5B. Any steel target placed on Range 5C must be at least 5 feet away from the Hesco barrier and must be placed in a way that minimizes lead fragments from landing on the neighboring property.

3.3.18- Targets may not be placed in such a way that bullets passing through the target or ricocheting from the target could impact Hesco barriers

3.3.19- Steel targets on Range 3 and Range 4 are not required to be placed under the eyebrows at the end of the range.

3.3.20- Match stages should be designed in a manner that minimizes confusion between rifle and pistol steel targets.

3.3.21- Match stages may not be designed in a manner that requires match participants to be downrange of a loaded firearm unless the firearm is stowed in a drop box or a “dump barrel” with the muzzle pointing towards the ground.

SECTION 3.3

MATCH REQUIREMENTS

Firearms may not be retrieved from the drop box/dump barrel unless the RO is present.

3.3.22- Match stages on Range 5 may not be designed in a manner that requires match participants to move past the vehicle gates with a loaded long gun or an unholstered and loaded handgun.

3.3.23- Match stages may not be designed in a manner that requires match participants to violate the 180-degree rule with a firearm.

3.3.24- Match stages may not be designed in a manner that requires match participants to move between ranges with unholstered or loaded firearms.

3.3.25- During Pima Pistol Club sanctioned matches, training or practice sessions, and other user group activities - firearms are to remain in an unloaded state until the load and make ready command by the MD/RO/RSO. For additional information on these groups and their requirements, see the MD/RO/SO

SECTION 4

CONTROL OF THE FIRING LINE

When there is no Chief Range Safety Officer (CRSO), Range Safety Officer (RSO), Match Director (MD), Range Officer (RO), present and in charge of a firing line, the operation of the shooting ranges at the Club will follow the private club model wherein participants on the firing line are responsible for conducting the minute-by-minute operation of the firing line and enforcing all Pima Pistol Club safety rules. The rules of Pima Pistol Club contained in this manual must be followed during normal range activity periods. In the event of an emergency, ANYONE can call a CEASE FIRE and report the emergency to the on-duty Range Safety Officer.

4.1- Ceasefire periods are for target placement and maintenance or for any time people must go forward of the firing line. Target placement, retrieval and down range maintenance may only be performed during a ceasefire/cold range condition.

4.2- In the absence of a CRSO/RSO/MD/RO a cease fire shall be observed when most of the range users on a firing line agree to such a cease fire. Every participant on the firing line must acknowledge the cease fire/cold range condition

4.3- Those requesting a cease fire must be considerate of other range users who may be in the middle of a string of fire.

4.4- For public ranges, every range user must clear their firearm, remove any magazines and ammunition, lock the actions to the rear, insert empty chamber indicator flag into

SECTION 4

CONTROL OF THE FIRING LINE

chamber and step behind the yellow line. For member-only ranges, every range user must clear their firearm, remove any magazines and ammunition, lock the actions to the rear, and stay 3 feet away from the shooting bench or table.

4.5- For public ranges, the range user calling the cease fire/cold range will verify that every other range user is behind the yellow line and that all weapons are unloaded and flagged. For member-only ranges, the range user calling the cease fire/cold range will verify that every other range user is 3 feet behind the shooting bench or table, and that all weapons are unloaded.

4.6- The range user calling the cease fire/cold range will, while standing at the electronic audible signal switch, verbally affirm that the firing line is ready on the right and ready on the left. Upon confirmation, that range user will announce that the firing line is cold and then will turn on the signal. At this time all range users may go down range and tend their targets.

4.7- At NO time during a cold range/cease fire are range users allowed to handle firearms or loiter near shooting positions.

4.8- When the range users have returned from their targets and all are safely behind the yellow line, the range user who called the cease fire/cold range will visually inspect the entire range and verify all shooters are safe. The range user will then verbally affirm that the firing line is ready on the right and ready

SECTION 4

CONTROL OF THE FIRING LINE

on the left. The range user will then announce that the firing line is hot and turn off the audible signal.

4.9- Firing Line Command

4.9.1- In the absence of a Range Safety Officer, the range user requesting the cease fire/cold range will verbally ask each range user "Can we go cold?"

4.9.2- When the range user requesting the cease fire/cold range has verified everyone has complied with 48.4 of this section, the range user will ask while looking to their right "Is the firing line ready on the right?". When all range user to the right acknowledge they are ready on the right, the range user will look to their left and ask "Is the firing line ready on the left?". When all range users on the left acknowledge they are ready, the requestor will turn on the audible signal and announce, "The range is cold".

4.9.3- At this point range users may go down range and tend their targets.

4.9.4- When all range users have returned and are behind the yellow line the requestor will look to their right and ask, "Is the firing line ready on the right?". The requestor will look to their left and ask, "Is the firing line ready on the left?". When all range users acknowledge they are ready the requestor will turn off the audible signal and announce, "The range is hot, you may commence firing."

SECTION 4

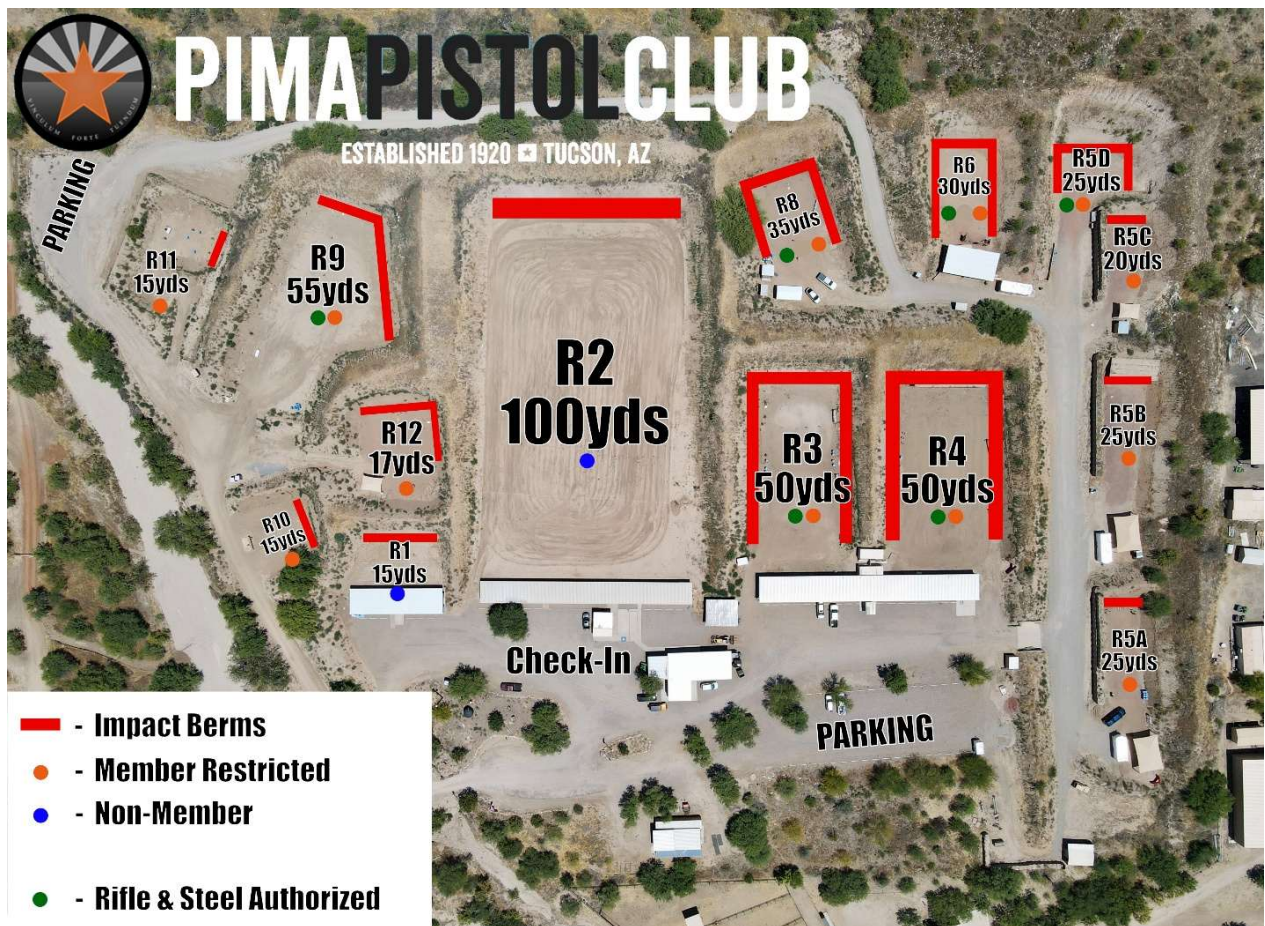
CONTROL OF THE FIRING LINE

4.9.5- An on-duty RSO may take control of the firing line at any time for any reason

SECTION 5

RANGE SPECIFIC RULES

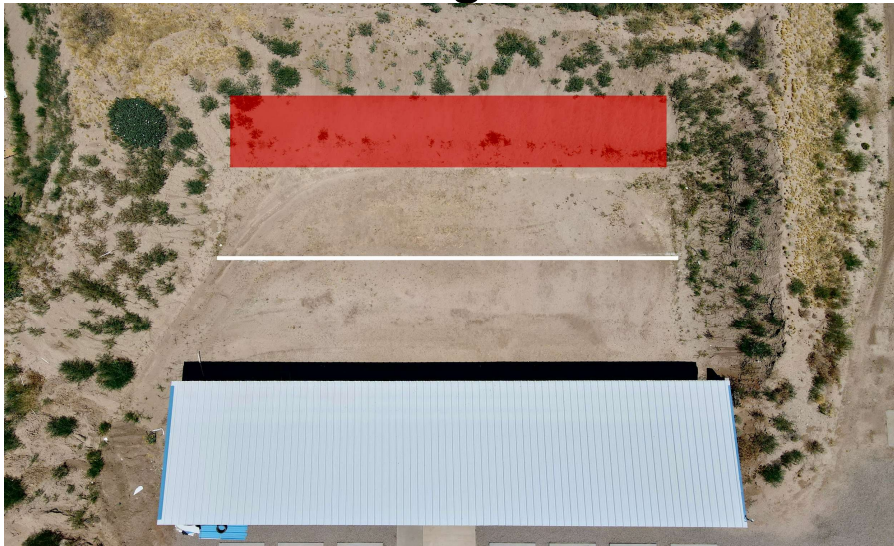
For all photos depicted of the individual ranges, the Impact Berm is marked in red, the Minimum Distance Line is marked in white. No targets may be placed further in the up-range direction than the minimum distance line depicted*



SECTION 5

RANGE SPECIFIC RULES

Range 1



5.1- Range 1 is a 10-15 yard Public handgun caliber only range.

5.2.1- All firearms must be unloaded and cased or in a bag when being transported to and from the bench.

5.2.2- Firearms may only be transported to and from the bench during a Hot range condition and may only be cased and uncased at the bench during Hot range conditions.

5.2.3- Range 1 is designed to engage each target directly in front of each booth firing position. No angled firing or target transitions are allowed, only one target stand per booth is permitted.

5.2.4- Use of chamber flags is required.

5.2.5- Rifles, Rifle Caliber Pistols and Shotguns are prohibited. Pistol Caliber Carbines are allowed.

SECTION 5

RANGE SPECIFIC RULES

5.2.6- Targets are to be placed no closer than 10 yards from the booths.

5.2.7- Cold Range procedures from Section 4 are to be utilized.

5.2.8- Steel targets are in place at the North end of the range provided by the club. They can only be shot from between the upright poles marked "STEEL". No Steel Core ammunition is allowed to be shot at steel targets. Only club and match steel are allowed on Range 1. The steel is only to be moved by PPC Staff.

SECTION 5

RANGE SPECIFIC RULES

Range 2



5.2- Range 2 is a 100-Yard Public Range meant for rifle use.

5.2.1- All firearms must be unloaded and cased or in a bag when being transported to and from the bench.

5.2.2- Firearms may only be transported to and from the bench during a Hot range condition and may only be cased and uncased at the bench during Hot range conditions.

5.2.3- Use of chamber flags is required.

SECTION 5

RANGE SPECIFIC RULES

5.2.4- Rapid fire is prohibited. Rapid fire is defined as a rate of fire faster than one round fired per second.

5.2.5- Slings may only be used for bracing and support purposes.

5.2.6- Rifles & Shotguns on Range 2 must have a shoulder stock or similar shoulder support accessory, except for those firearms allowed in 5.2.12 Pistol grip only shotguns and pistol grip only rifles are not allowed on Range 2.

5.2.7- Targets are to be placed no closer than 25 yards from the firing line.

5.2.8- Range users firing from the standing position must place targets at least 50 yards from the firing line.

5.2.9- Range 2 is designed to engage a target or targets directly in front of each bench position. Wide angles and wide target transitions are prohibited.

5.2.10- Steel targets are in place at the North end of the range provided by the club. They can only be shot from benches marked "STEEL". No Steel Core ammunition is allowed to be shot at steel targets. Only club and match steel are allowed on Range 2. The steel is only to be moved by PPC Staff.

5.2.11- Cold range procedures from section 4 are to be utilized.

SECTION 5

RANGE SPECIFIC RULES

5.2.12- Bullseye pistols, long range pistols (i.e., Thompson Contenders and similar), rifle caliber pistols, hunting caliber pistols, and Bullseye shooters may use this range in the Bullseye area at the south end bench.

SECTION 5

RANGE SPECIFIC RULES

Range 3 & 4



5.3/4- Range 3 & 4 are Member Only 50-yard Rifle/Pistol Ranges. Steel Targets are authorized.

5.3/4.1- All shots must be taken from within the range bay area or at the shooting benches located on Ranges 3 & 4

SECTION 5

RANGE SPECIFIC RULES

Range 5A, 5B, 5C



5.5ABC- Ranges 5A, 5B, & 5C are Pistol Caliber Ranges

5.5ABC.1- Target stands must be placed so that the rounds fired will not strike the HESCO barriers or side berms other than in the designated impact areas marked in red.

5.5ABC.2- No shooting from under the shade structures on Range 5A&B. Shooting is allowed under the shade structure on 5C.

5.5ABC.3- Shooting steel is only authorized on 5C during matches, and for BOD approved instruction.

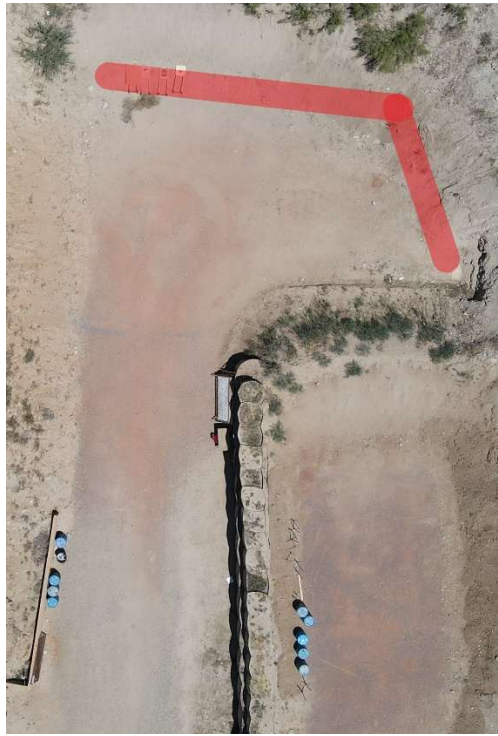
5.5ABC.4- No rounds are to impact outside of the impact markers on the ranges.

5.5ABC.5- All Shots must be taken from on the line of or in front of the firing line markers.

SECTION 5

RANGE SPECIFIC RULES

Range 5D



5.5D- Range 5D is a pistol, rifle caliber, 37mm & 40mm launcher and archery range. Steel Targets are authorized.

5.5D.1-Nocked arrows must always be pointed down or towards the target.

5.5D.2-No overhead/sky drawing. Keep your arm parallel to the ground when drawing a bow.

5.5D.3-No dry firing of bows.

5.5D.4-Bow users must provide their own targets, and the targets must be able to withstand the impact of the arrows so that arrows are not blowing through the target. All targets must be approved by an on-Duty Range Safety Officer.

SECTION 5

RANGE SPECIFIC RULES

5.5D.5-No hay or straw bales are to be used as backstops.

5.5D.6- Targets must be set as close to the berm as possible.

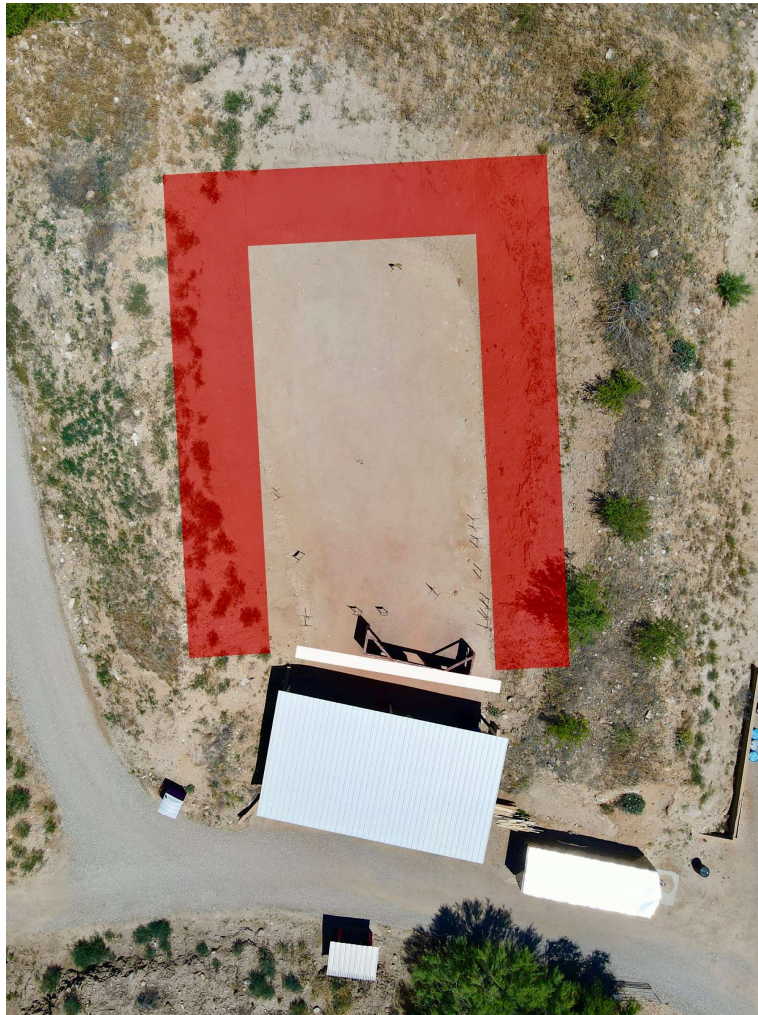
5.5D.7- When retrieving arrows that impacted the berm archers should wear gloves to prevent lead contamination and reduce risk of cuts from sharp metal.

5.5D.8- 37mm and 40mm launchers are authorized only with non-explosive, non-gaseous, and non-lethal trainer ammunition, such as chalk or thumper ammunition. No other ammunition is permitted.

SECTION 5

RANGE SPECIFIC RULES

Range 6



5.6- Range 6 is a pistol and rifle caliber range. Steel Targets are authorized.

5.6.1- No rounds are to impact outside of the impact markers on the ranges.

5.6.2- All Shots must be taken from on the line of or in front of the firing line markers.

SECTION 5

RANGE SPECIFIC RULES

Range 8



5.8- Range 8 is a pistol and rifle caliber range. Steel Targets are authorized.

5.8.1- All Shots must be taken from within the range bay.

SECTION 5

RANGE SPECIFIC RULES

Range 9



5.9- Range 9 is a pistol and rifle caliber range. Steel Targets are authorized.

5.9.1- No rounds are to impact outside of the impact markers on the ranges.

5.9.2- All Shots must be taken from on the line of or in front of the firing line markers.

SECTION 5

RANGE SPECIFIC RULES

Range 10



5.10- Range 10 is a Pistol Caliber Range

5.10.1- Target stands must be placed against the berm.

5.10.2- No rounds are to impact outside of the impact markers on the range.

5.10.3- Users are permitted to fire from the bench.

SECTION 5

RANGE SPECIFIC RULES

Range 11



5.11- Range 11 is a Pistol Caliber Range

5.11.1- All Shots must be taken within the range bay.

5.11.2- No rounds are to impact outside of the impact markers on the ranges.

5.11.3- All Shots must be taken from on the line of or in front of the firing line markers.

SECTION 5

RANGE SPECIFIC RULES

Range 12



5.12- Range 12 is a Pistol Caliber Range

5.12.1- Shooting steel is only authorized during board approved matches.

5.12.2- No rounds are to impact outside of the impact markers on the ranges.

5.12.3- All Shots must be taken from on the line of or in front of the firing line markers.

SECTION 5

RANGE SPECIFIC RULES

200 Yard Rifle Range



5.200- Special use 200-yard rifle only range.

5.200.1- Coordinate with the Range Safety Officer to close and lock gates.

5.200.2- Rapid fire is prohibited.

5.200.3- Cold range procedures from section 5.0 are to be utilized.

FREQUENTLY ASKED QUESTIONS

Question: Are Chamber Flags Required?

Answer: Yes, chamber flags are required on all public ranges, and for most of our matches. If you don't have a chamber flag when you arrive at the range, they can be purchased at the Range Office for \$1.00 each

Question: What does it mean when the range is hot/cold?

Answer: On a range in a "Hot" status, shooters are authorized to handle and fire firearms in a safe manner.

On a range in a "Cold" status, all firearms must be cleared and chamber flagged, shooters may not handle firearms, shooters must remain a set distance from the shooting bench unless headed down range to tend to targets.

Question: Can I shoot a shotgun on the range?

Answer: Yes, however you may NOT shoot at PPC target stands unless you're shooting slugs. If a shooter is not shooting slugs, they may fire directly into the berm, or at personal target stands approved by the On-Duty RSO

Question: What is the minimum distance on I range 2?

Answer: The minimum distance on range 2 when seated at a bench or in a prone/laying position is 25 yards.

The minimum distance in a standing position is 50 yards.