



# **RANGE SAFETY MANUAL**

***APRIL 23, 2024***



## TABLE OF CONTENTS

Introduction. *(Page 3)*

1. Universal Laws of Firearms Safety. *(Page 4)*
2. Pima Pistol Club Requirements. *(Page 4)*
3. Firearms Handling & Transportation While on Range. *(Page 5)*
4. Prohibited Items and Range User Responsibilities. *(Page 8)*
5. Control of the Firing Line. *(Page 10)*
6. Range Purposes, Uses, & Range Specific Rules. *(Page 12)*
  - (I) Range 1 Public Pistol Range. *(Page 12)*
  - (II) Range 2 100 yard Public Rifle Range. *(Page 14)*
  - (III) Ranges 3 & 4 Tactical Bays. *(Page 16)*
  - (IV) Ranges 5A, 5B, & 5C Pistol Bays. *(Page 18)*
  - (V) Range 5D Pistol/Rifle Bay. *(Page 20)*
  - (VI) Range 6 Pistol/Rifle Competition Bay. *(Page 22)*
  - (VII) Range 8 Pistol/Rifle Competition Bay. *(Page 24)*
  - (VIII) Range 9 Pistol/Rifle Bay. *(Page 26)*
  - (IX) Range 10 Pistol Bay. *(Page 28)*
  - (X) Range 11 Pistol Bay. *(Page 30)*
  - (XI) Range 12 Pistol Bay. *(Page 32)*
  - (XII) Range 13 Chronograph Bay. *(Page 34)*
  - (XIII) 200 Yard Rifle Range. *(Page 34)*
7. Range Usage Quick Reference. *(Page 36)*

## INTRODUCTION

Listed herein are various rules and regulations to assure personal and group safety, the orderly operation of Pima Pistol Club and provide for the promotion of recreational shooting sports as well as training and education. By means of reference, the general safety rules of the National Rifle Association (NRA) are hereby adopted if they do not conflict with the rules contained herein, the bylaws of Pima Pistol Club and official documents published by Pima Pistol Club. During matches with national organization affiliation, the rules of that national organization must be applied if they do not conflict with Pima Pistol Club rules. In the case of any conflict, the rules of Pima Pistol Club will apply. Violation of any one or more of the rules can result in severe disciplinary action being taken by Pima Pistol Club. Additionally, any person who exhibits by his/her behavior that they are an immediate and/or continuing safety hazard, either as a participant or observer, may be ordered to leave the premises by the on-duty Range Safety Officer. Failure to comply will result in law enforcement being called and an official report filed. Criminal Statues -Title 13-1502 Trespassing by refusing to leave; Title 13-2904 Reckless use of firearm; 13-2908 Recklessly creates unsafe condition will be cited.

## **1. The Universal Laws of Firearm Safety**

- 1.1. Treat every firearm as if it were loaded.
- 1.2. Never point a firearm at anything you are not willing to destroy.
- 1.3. Keep your finger off the trigger until your sights are on the target and you are ready to fire.
- 1.4. Know your target and what is behind it.

## **2. Pima Pistol Club Requirements**

- 2.1. Know your specific firearm and target systems and know how to safely operate that firearm and target.
- 2.2. Always wear wrap around eye and hearing protection while at Pima Pistol Club range. This applies to everyone on the range.
- 2.3. Always keep the muzzle pointed in a safe direction. All uncased & unloaded (*see unloaded status 3.2.2.*) long guns not in use must be pointed at the berm or straight up in the air. Pistols must be pointed at the berm, bagged, or holstered when appropriate.
- 2.4. Always inspect berm areas and steel targets for functionality and stability before using. NEVER shoot on steel that is cratered, pitted, or damaged in any way.

### **3. FIREARMS HANDLING & TRANSPORTATION WHILE ON RANGE**

- 3.1. PPC operates as a cold range. A cold range is defined as a range that does not allow uncased or holstered carry of loaded or unloaded firearms in common areas and public range bays. *For the Peace Officer exception see 3.13 below.*
- 3.2. All firearms must be unloaded and transported in a case until arrival at the assigned range bay and at the proper uncasing location.
  - 3.2.1. Unloaded condition for handguns is with the hammer or striker fully down on an empty chamber or cylinder, with no magazine inserted.
  - 3.2.2. Unloaded condition for rifles is with the bolt locked back to the rear or removed, firearm on safe, and an empty chamber indicator flag inserted into the chamber.
- 3.3. Case and uncase firearms at the firing line bench or safe area only.
- 3.4. NEVER handle any uncased firearm away from the firing line on public ranges -or- range bay areas on member ranges. No handling of firearms in the parking lot areas.
- 3.5. Always keep the muzzle pointed downrange when uncasing the firearm.
- 3.6. No exposed ammunition is allowed in the safe areas.
- 3.7. Loaded firearms are only permitted on the firing line during such times that firing is permitted -or- at matches, training events, or other organized activities when directed by the Match Director, Range Officer, or Safety Officer (MD/RO/RSO/SO). *For the Peace Officer exception see 3.13 below.*
- 3.8. Loaded and unloaded firearms MUST always be under the direct control of the user and MUST always be pointed toward the target backstop -or- vertically in the case of long guns when they are unloaded.

- 3.9. During cease fire periods, all firearms must be benched and empty, with magazines removed, actions locked back/open, with empty chamber indicator flags inserted into the chamber, and pointed down range.
- 3.10. If a range user has more than one long gun, those long guns not in use must be placed in racks, muzzle pointing up, empty, with magazines removed, actions locked back/open, and with empty chamber indicator flags inserted into the chamber.
- 3.11. During all cease fire periods, all range users MUST remain at least three feet behind the firing line (behind the yellow line) -or- three feet in front of the firing line (in front of the red line).
- 3.12. No handling of firearms or accessories is allowed during cease fire periods. Disqualification from further range participation may result if violations are observed.
- 3.13. Peace Officer exception - Sworn local, state, and federal peace officers -or- properly accredited Peace Officers under HR-218 or LEOSA may arrive with loaded and holstered handguns. Any individual fitting this criteria must identify themselves to the on duty RSO upon entrance to the facility.
- 3.13.1. In the case of a match, the Peace Officer is to seek out the MD/RO/SO who will direct them to a safe point down range to return the firearm to condition four (see 3.13.1.5.) and upon completion of the match may reload the firearm, all while under the direct supervision of the MD/RO/SO.
- 3.13.1.1. Firearm condition zero is: Magazine inserted, round in the chamber, safety off, hammer back if applicable.
- 3.13.1.2. Firearm condition one is: Magazine inserted, round in the chamber, safety on, hammer back if applicable.
- 3.13.1.3. Firearm condition two is: If applicable, magazine inserted, round in the chamber or cylinder, hammer forward.

3.13.1.4. Firearm condition three is: Magazine inserted, no round in the chamber, hammer forward if applicable.

3.13.1.5. Firearm condition four is: No magazine inserted, no round in the chamber, hammer is forward, cylinder is clear of all rounds if applicable.

3.13.2. At any time on a public firing line, the Peace Officer must wait until such time as active firing is taking place (Hot range condition) before removing the loaded firearm from the holster and also before reloading the firearm at the termination of the range session.

3.13.3. The Peace Officer must always point the muzzle in a safe direction while unloading and loading.

3.14. During Pima Pistol Club sanctioned matches, during training or practice sessions, and during other user group firearms activities - firearms are to remain in condition four (see 3.13.1.5.) until the load and make ready command by the MD/RO/SO. For additional information on these groups and their requirements, see the MD/RO/SO.

#### **4. PROHIBITED ITEMS AND RANGE USER RESPONSIBILITIES**

- 4.1. Consumption of beverages containing alcohol, ingestion of illegal drugs, or use of prescription medication causing disorientation and/or drowsiness prior to or during range use is prohibited. Possession and/or consumption of such beverages, illegal drugs, or medications on the Pima Pistol Club premises is always prohibited. Violators will be denied access to the premises or ejected from the premises. Should the violation appear to also be a violation of statutory laws, or if it will be a violation of statutory laws, law enforcement officials will be notified.
- 4.2. Only PPC approved targets and target stands are allowed. Consult the on-duty Range Safety Officer for clarification and approval.
- 4.3. Shooting steel targets at less than 10 yards is generally prohibited outside matches.
- 4.4. Shooting PPC steel targets with rifle calibers is prohibited.
- 4.5. Armor piercing and tracer ammunition is strictly prohibited.
- 4.6. Bump fire stocks, bump firing, binary triggers, burst fire, fully automatic firearms and similar devices are NOT allowed.
- 4.7. It is the shooters responsibility to clean up or police their shooting position. This means to pick up empty casings including: brass, steel, and shotgun shells. Brass should be placed in brass cans and discarded items in the trash.
- 4.8. If upon arrival, a range user notices an unsafe or unsatisfactory range condition, they must notify the Range Safety Officer before using that range.
- 4.9. When unsafe conditions or unsafe actions are observed by anyone on the range, the Range Safety Officer must be notified immediately.



- 4.10. All target stands, steel targets, and props must be returned to the storage locations they were taken from in the range bay or any other accessed storage areas.
- 4.11. All participants and observers have a responsibility to obey the instructions of the Range Safety Officer.
- 4.12. Those that violate any of the rules herein or stated are personally responsible for any and all damages to property and/or personal injury.
- 4.13. In the event of any dispute, the decision of the on-duty Range Safety Officer is FINAL.

## **5. CONTROL OF THE FIRING LINE**

When there is no Chief Range Safety Officer (CRSO), Range Safety Officer (RSO), Match Director (MD), or Safety Officer (SO) present and in charge of a firing line, the operation of the shooting ranges at the Club will follow the private club model wherein participants on the firing line are responsible for conducting the minute by minute operation of the firing line and enforcing all Pima Pistol Club safety rules. The rules of Pima Pistol Club contained in this manual must be followed during normal range activity periods. In the event of an emergency, anyone can call a CEASE FIRE and report the emergency to the on-duty Range Safety Officer.

- 5.1. Cease fire periods are for target placement and maintenance -or- for any time persons must go forward of the firing line. Target placement, retrieval and down range maintenance may only be performed during a cease fire/cold range condition.
- 5.2. In the absence of a CRSO/RSO/MD/SO a cease fire shall be observed when the majority of the range users on a firing line agree to such a cease fire. Every participant on the firing line must acknowledge the cease fire/cold range condition.
- 5.3. Those requesting a cease fire must be considerate of other range users who may be in the middle of a string of fire.
- 5.4. Every range user must clear their firearm, remove any magazines and ammunition, lock the actions to the rear, insert empty chamber indicator flag into chamber and step behind the yellow line.
- 5.5. The range user calling the cease fire/cold range will verify that every other range user is behind the yellow line and that all weapons are clear.

- 5.6. The range user calling the cease fire/cold range will, while standing at the electronic audible signal switch, verbally affirm that the firing line is ready on the right, and the firing line is ready on the left. Upon confirmation, that range user will announce that the firing line is cold and then will turn on the signal. At this time all range users may go down range and tend their targets.
- 5.7. At NO time during a cold range/cease fire are range users allowed to handle firearms or loiter near shooting positions. Handling firearms during a cold range condition is a serious safety violation and could result in disciplinary action.
- 5.8. When the range users have returned from their targets and all are safely behind the yellow line, the range user who called the cease fire/cold range will visually inspect the entire range and verify all shooters are safe. The range user will then verbally affirm that the firing line is ready on the right and the firing line is ready on the left. The range user will then announce that the firing line is hot and turn off the audible signal.
- 5.9. Firing Line Commands:
- 5.9.1. In the absence of a Range Safety Officer, the range user requesting the cease fire/cold range will verbally ask each range user "Can we go cold?"
- 5.9.2. When the range user requesting the cease fire/cold range has verified everyone has complied with 5.4 of this section, the range user will ask while looking to their right "Is the firing line ready on the right?". When all range user to the right acknowledge they are ready on the right, the range user will look to their left and ask "Is the firing line ready on the left?". When all range users on the left acknowledge they are ready, the requestor will turn on the audible signal and announce, "The range is cold". At this point range users may go down range and tend their targets.
- 5.9.3. When all range users have returned and are behind the yellow line the requestor will look to their right and ask, "Is the firing line ready on

the right?”. The requestor will look to their left and ask, “Is the firing line ready on the left?”. When all range users acknowledge they are ready the requestor will turn off the audible signal and announce “The range is hot, you may commence firing.”

## 6. RANGE PURPOSES, USAGE, AND RANGE SPECIFIC RULES

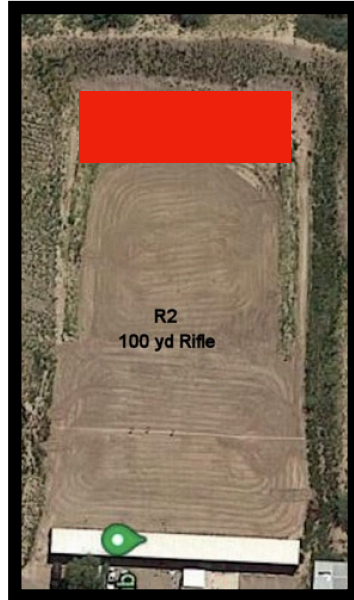
6.1. **Range #1 Public Pistol Range** is a handgun only range for members, guests and day shooters designed for conventional style shooting from the benches in the booths. (*Impact berm in RED*)



- 6.1.1. All firearms must be unloaded and cased or in bag when being transported to and from the bench.
- 6.1.2. Firearms may only be transported to and from the bench during a Hot range condition.
- 6.1.3. Firearms may only be cased and uncased at the bench during Hot range conditions.
- 6.1.4. Drawing from a holster is strictly prohibited.
- 6.1.5. Rapid fire is strictly prohibited. Rapid fire is defined as a rate of fire faster than one round fired per second.
- 6.1.6. Range 1 is designed to engage each target directly in front of each booth firing position. No angled firing or target transitions are allowed.

- 6.1.7. Use of empty chamber indicator flags are required.
- 6.1.8. Rifles and Rifle Caliber Pistols are prohibited.
- 6.1.9. Pistol Caliber Carbines are prohibited.
- 6.1.10. Shotguns are prohibited.
- 6.1.11. Bump fire stocks, bump firing, binary triggers, burst fire, fully automatic firearms and similar devices are NOT allowed.
- 6.1.12. Steel targets are prohibited.
- 6.1.13. Targets are to be placed no closer than 10 yards from the booths.
- 6.1.14. In all cases, targets must not be placed in such a manner that rounds will go over the berms either directly or by ricochet.
- 6.1.15. Cold range procedures from section 5.0 are to be utilized.
- 6.1.16. Range users are responsible for cleaning up their shooting area to include brass being placed in brass barrels and any trash in trash cans.
- 6.1.17. It is the range user's responsibility to set up all target stands in a manner in which the rounds will hit the berm safely from the midpoint of the berm down to the floor of the range. The rounds must NOT skip off the floor of the range nor go over the berm. The shooter is responsible for all their shots.

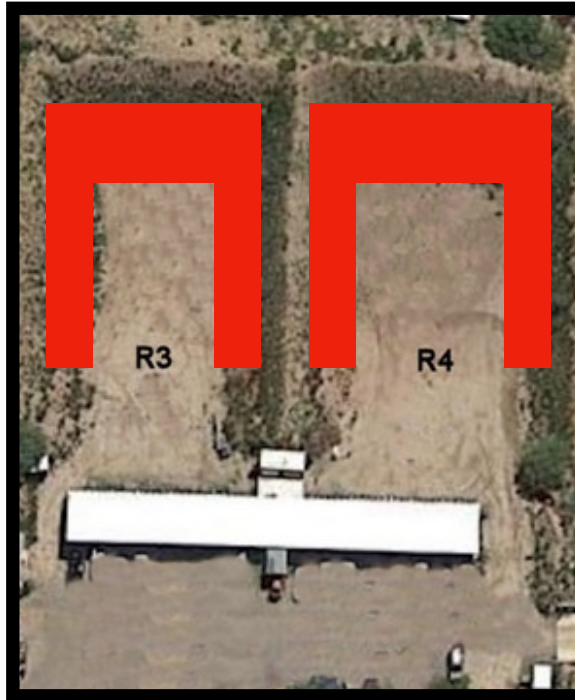
6.2. **Range #2 100 Yard Public Range** is a rifle range for use by members, guests, and day shooters. This range is designed for bench rest, standing/offhand and prone rifle shooting. (*Impact berm in RED*)



- 6.2.1. 50 Caliber BMG and larger are strictly prohibited.
- 6.2.2. Rapid fire is strictly prohibited. Rapid fire is defined as a rate of fire faster than one round fired per second.
- 6.2.3. Bump fire stocks, bump firing, binary triggers, burst fire, fully automatic firearms and similar devices are NOT allowed.
- 6.2.4. Slinging rifles in a tactical style is strictly prohibited. Slings are only permitted when used for bracing purposes.
- 6.2.5. Rifles & Shotguns on Range 2 must have a shoulder stock except for those firearms allowed in 6.2.6. Pistol grip only shotguns -and- pistol grip only rifles are not allowed on Range 2.
- 6.2.6. Bullseye pistols, long range pistols (i.e., Thompson Contenders and similar), rifle caliber pistols, hunting caliber pistols, and Bullseye shooters may use this range in the Bullseye area at the south end bench.

- 6.2.7. Targets are to be placed no closer than 25 yards from the firing line.
- 6.2.8. Range users firing from the standing position must place targets at least 50 yards from the firing line.
- 6.2.9. In all cases, targets must not be placed in such a manner that rounds will go over the berms either directly or by ricochet.
- 6.2.10. Range 2 is designed to engage a target or targets from directly in front of each bench position. Wide angles and wide target transitions are prohibited.
- 6.2.11. Steel targets are strictly prohibited on this range.
- 6.2.12. Shotguns can be fired at targets on target stands ONLY when firing slugs.
- 6.2.13. Shotguns firing shot may be function tested on this range, however, not fired at any target stands or targets.
- 6.2.14. Cold range procedures from section 5.0 are to be utilized.
- 6.2.15. Shooters are responsible for cleaning up their shooting area to include brass being placed in brass barrels, trash being placed in trash cans and Shotgun shells being properly disposed of.
- 6.2.16. It is the range user's responsibility to set up all target stands in a manner in which the rounds will hit the berm safely from the midpoint of the berm down to the floor of the range. The rounds must NOT skip off the floor of the range nor go over the berm. The shooter is responsible for all their shots.

6.3. **Ranges 3 and 4 Tactical Ranges** are designed as tactical practice and training ranges for use by members, their guests and for board approved matches and events. (*Impact berms in RED*)



6.3.1. Rifles, pistols, shotguns, and pistol caliber carbines are authorized on these ranges. All calibers must be less than 50 BMG.

6.3.2. Drawing from a holster is authorized.

6.3.3. Tactical Slinging of rifles, carbines, and shotguns is authorized.

6.3.4. Bump fire stocks, bump firing, binary triggers, burst fire, fully automatic firearms and similar devices are NOT allowed.

6.3.5. All shots must be taken from within the range bay area.

6.3.6. Never point a firearm up range or break the 180 degree rule. See a Range Safety Officer if you are unclear on this safety rule.

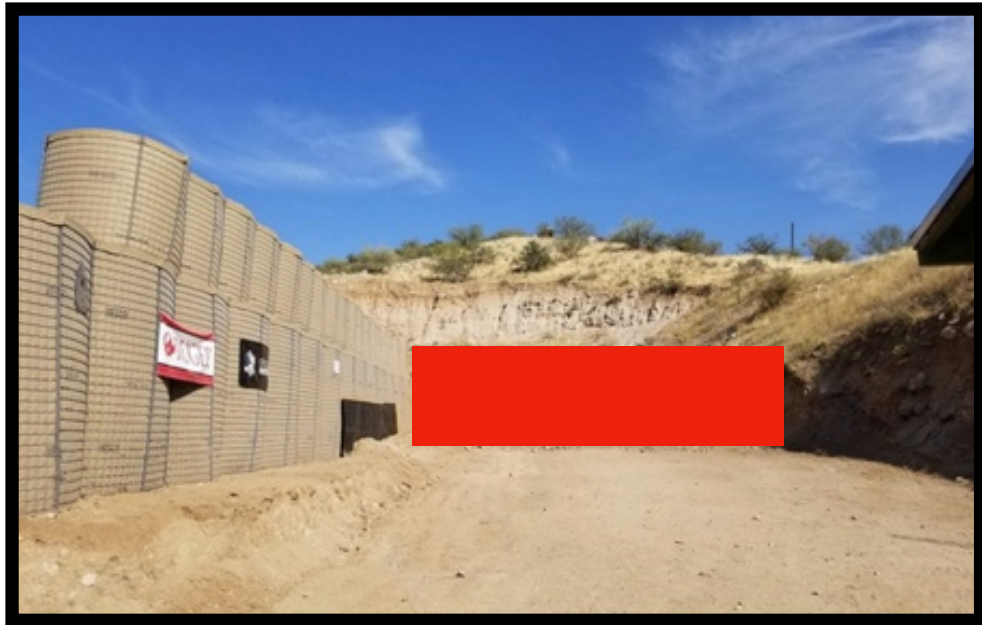
6.3.7. Only Shotguns firing *slugs* may be fired at target stands. Shotguns firing *SHOT* may NOT be fired at target stands.



- 6.3.8. Loaded firearms must always be pointed at the berm downrange, -or- holstered with proper safety engaged for pistols, -or- full low carry slung position with safety engaged for rifles.
- 6.3.9. NEVER point a firearm towards the bench, parking lot or break the 180-degree plane of the range regardless of firearm condition. This is a serious safety violation and could result in disciplinary action.
- 6.3.10. It is the range user's responsibility to set up all target stands in a manner in which the rounds will hit the berm safely from the midpoint of the berm down to the floor of the range. The rounds must NOT skip off the floor of the range nor go over the berm. The shooter is responsible for all their shots.
- 6.3.11. Empty Chamber Indicator Flags are required in all firearms uncased and not in use.
- 6.3.12. Shooting steel with pistol calibers is authorized on these ranges.
- 6.3.13. Pima Pistol Club provides only Pistol Caliber steel. All plate racks, pepper poppers and other props may only be shot with pistol caliber ammunition and at NO closer than 10 yards.
- 6.3.14. Approved steel targets must be placed close to the berm in a manor to safely control any ricochet.
- 6.3.15. Range approved personal Rifle caliber steel may be shot on these ranges but must be placed against the berm in a manor to safely control any ricochet.
- 6.3.16. Range users must ensure that all firearms are safe and that the range is clear before going down range.
- 6.3.17. Range users must never handle a firearm when someone is down range.
- 6.3.18. Range users must return all steel targets, target stands and props to their proper location.

6.3.19. Range users must clean up brass, trash and shotgun shells and place these items in the appropriate containers.

6.4. **Ranges 5A, 5B, & 5C Pistol Bays** are Pistol Caliber Only ranges designed for practice and casual use by members, their guests and for board approved matches and events. (*Impact berm in RED*)



6.4.1. Pistols, pistol caliber carbines, and rim fire firearms are authorized.

6.4.2. Use of holsters is authorized.

6.4.3. Rifle calibers are strictly prohibited.

6.4.4. Bump fire stocks, bump firing, binary triggers, burst fire, fully automatic firearms and similar devices are NOT allowed.

6.4.5. Target stands must be placed so that the rounds fired will not strike the HESCO barriers or side berms.

6.4.6. All Shots must be taken from within the range bay area.

- 6.4.7. No shooting from under the shade structures.
- 6.4.8. Never point a firearm up range or break the 180 degree rule. See a Range Safety Officer if you are unclear on this safety rule.
- 6.4.9. Loaded firearms must always be pointed at the berm downrange, -or- holstered with proper safety engaged for pistols, -or- full low carry slung position with safety engaged for rifles.
- 6.4.10. It is the range user's responsibility to set up all target stands in a manner in which the rounds will hit the berm safely from the midpoint of the berm down to the floor of the range. The rounds must NOT skip off the floor of the range nor go over the berm. The shooter is responsible for all their shots.
- 6.4.11. Shooting steel is only authorized on 5B & 5C during board approved matches.
- 6.4.12. Empty chamber indicator flags are required for uncased and unused firearms on these ranges.
- 6.4.13. Range users must ensure that all firearms are in a safe condition and that the range is clear before going down range.
- 6.4.14. Range users must never handle a firearm when someone is down range.
- 6.4.15. Range users must return all target stands and props to their proper locations.
- 6.4.16. Range users must clean up brass and trash and place these items in the appropriate containers.

6.5. **Range 5D Pistol/Rifle Bay** is a pistol and rifle caliber range designed for practice, casual use, tactical training for members and their guests and for board approved matches and events. *(Impact berms in RED)*



- 6.5.1. Pistols, Rifles under 50 BMG, and Shotguns are authorized on this range.
- 6.5.2. Holsters are authorized on this range.
- 6.5.3. Tactical Slinging of rifles, carbines, and shotguns is authorized.
- 6.5.4. Bump fire stocks, bump firing, binary triggers, burst fire, fully automatic firearms and similar devices are NOT allowed.
- 6.5.5. Shooting steel with pistol calibers is authorized on these ranges.
- 6.5.6. Pima Pistol Club provides only Pistol Caliber steel. All plate racks, pepper poppers and other props may only be shot with pistol caliber ammunition and at NO closer than 10 yards.
- 6.5.7. Approved steel targets must be placed close to the berm in a manor to safely control any ricochet.
- 6.5.8. Targets must be placed so that the rounds will impact the berm in a safe manner.

- 6.5.9. All shots must be taken in the range bay forward of the conex storage building.
- 6.5.10. Never point a firearm up range or break the 180 degree rule. See a Range Safety Officer if you are unclear on this safety rule.
- 6.5.11. Loaded firearms must always be pointed at the berm downrange, -or- holstered with proper safety engaged for pistols, -or- full low carry slung position with safety engaged for rifles.
- 6.5.12. It is the range user's responsibility to set up all target stands in a manner in which the rounds will hit the berm safely from the midpoint of the berm down to the floor of the range. The rounds must NOT skip off the floor of the range nor go over the berm. The shooter is responsible for all their shots.
- 6.5.13. Range users must never handle a firearm when someone is down range.
- 6.5.14. Range users must always return steel targets, target stands and props to their appropriate locations.
- 6.5.15. Range users must clean up brass and trash and place these items in the appropriate containers.

6.6. **Range 6 Pistol/Rifle Competition Bay** is a pistol and rifle caliber range designed for board sanctioned competition practice and matches. This range is for qualified match shooting members with the proper credentials only. No guests are allowed. *(Impact berms in RED)*



6.6.1. Pistols, Rifles under 50 BMG and Shotguns are authorized on this range.

6.6.2. Bump fire stocks, bump firing, binary triggers, burst fire, fully automatic firearms and similar devices are NOT allowed.

6.6.3. Shooting steel with pistol calibers is authorized on these ranges.

6.6.4. Pima Pistol Club provides only Pistol Caliber steel. All plate racks, pepper poppers and other props may only be shot with pistol caliber ammunition and at NO closer than 10 yards.

6.6.5. Approved steel targets must be placed close to the berm in a manor to safely control any ricochet.

6.6.6. Targets must be placed so that the rounds will impact the berm in a safe manner.

6.6.7. All shots must be taken in front of the shade structure.

- 6.6.8. Tactical Slinging of rifles, carbines, and shotguns is authorized.
- 6.6.9. Never point a firearm up range or break the 180 degree rule. See a Range Safety Officer if you are unclear on this safety rule.
- 6.6.10. Loaded firearms must always be pointed at the berm downrange, -or- holstered with proper safety engaged for pistols, -or- full low carry slung position with safety engaged for rifles.
- 6.6.11. It is the range user's responsibility to set up all target stands in a manner in which the rounds will hit the berm safely from the midpoint of the berm down to the floor of the range. The rounds must NOT skip off the floor of the range nor go over the berm. The shooter is responsible for all their shots.
- 6.6.12. Range users must never handle a firearm when someone is down range.
- 6.6.13. Range users must return steel targets, target stands, and props to their proper locations.
- 6.6.14. Range users must clean up brass, trash and shotgun shells and place these items in appropriate containers.

6.7. **Range 8 Pistol/Rifle Competition Bay** is a pistol and rifle caliber range designed for board sanctioned competition practice and matches. This range is for qualified match shooting members with the proper credentials only. No guests are allowed. *(Impact berms in RED)*



- 6.7.1. Pistols, Rifles under 50 BMG, and Shotguns are authorized on this range.
- 6.7.2. Bump fire stocks, bump firing, binary triggers, burst fire, fully automatic firearms and similar devices are NOT allowed.
- 6.7.3. Tactical Slinging of rifles, carbines, and shotguns is authorized.
- 6.7.4. Shooting steel with pistol calibers is authorized on these ranges.
- 6.7.5. Pima Pistol Club provides only Pistol Caliber steel. All plate racks, pepper poppers and other props may only be shot with pistol caliber ammunition and at NO closer than 10 yards.
- 6.7.6. Approved steel targets must be placed close to the berm in a manor to safely control any ricochet.
- 6.7.7. Targets must be placed so that the rounds will impact the berm in a safe manner.



- 6.7.8. Range users must never point a firearm up range or break the 180 degree rule. See a Range Safety Officer if you are unclear on this safety rule.
- 6.7.9. Loaded firearms must always be pointed at the berm downrange, -or- holstered with proper safety engaged for pistols, -or- full low carry slung position with safety engaged for rifles.
- 6.7.10. It is the range user's responsibility to set up all target stands in a manner in which the rounds will hit the berm safely from the midpoint of the berm down to the floor of the range. The rounds must NOT skip off the floor of the range nor go over the berm. The shooter is responsible for all their shots.
- 6.7.11. Range users must never handle a firearm when someone is down range.
- 6.7.12. Range users must return steel targets, target stands, and props to their appropriate locations.
- 6.7.13. Range users must clean up brass, trash and shotgun shells and place these items in appropriate containers.

6.8. **Range 9 Pistol/Rifle Bay** is a pistol and rifle caliber range designed for practice, casual use, tactical training for members and their guests and for board approved matches and events. *(Impact berms in RED)*



- 6.8.1. Rifles under 50 BMG, pistols, shotguns, and pistol caliber carbines are authorized on this range.
- 6.8.2. Drawing from a holster is authorized.
- 6.8.3. Tactical Slinging of rifles, carbines, and shotguns is authorized.
- 6.8.4. Bump fire stocks, bump firing, binary triggers, burst fire, fully automatic firearms and similar devices are NOT allowed.
- 6.8.5. Shotguns firing slugs may be fired at target stands. Shotguns firing shot may NOT be fired at target stands.
- 6.8.6. Firearms must always be pointed at the berm downrange or holstered when uncased.
- 6.8.7. NEVER point a firearm towards the bench, parking lot or break the 180-degree plane of the range regardless of firearm condition. This is a serious safety violation and could result in disciplinary action.

- 6.8.8. Loaded firearms must always be pointed at the berm downrange, -or- holstered with proper safety engaged for pistols, -or- full low carry slung position with safety engaged for rifles.
- 6.8.9. It is the range user's responsibility to set up all target stands in a manner that the rounds will hit the berm safely from the midpoint of the berm down to the floor of the range. The rounds must NOT skip off the floor of the range nor go over the berm. The range user is responsible for all their shots.
- 6.8.10. Empty Chamber Indicator Flags are required in all firearms not in use.
- 6.8.11. Shooting steel with pistol calibers is authorized on this range.
- 6.8.12. Pima Pistol Club provides only Pistol Caliber steel. All plate racks, peppers poppers and other props may only be shot with pistol caliber ammunition and NO closer than 10 yards.
- 6.8.13. Approved steel targets must be placed close to the berm in a manor to safely control any ricochet.
- 6.8.14. Range users must ensure that all firearms are safe and the range is clear before going down range.
- 6.8.15. Range users must never handle a firearm when someone is down range.
- 6.8.16. Range users must return all steel, target stands and props to their proper locations.
- 6.8.17. Range users must clean up brass, trash and shotgun shells and place these items in the appropriate containers.

6.9. **Range 10 Pistol Bay** is a pistol caliber range designed for practice and casual use for members and their guests and for board approved matches and events. *(Impact berm in RED)*



6.9.1. Pistols, pistol caliber carbines, and rim fire firearms are authorized.

6.9.2. Use of holsters is authorized.

6.9.3. Rifle calibers are strictly prohibited.

6.9.4. Bump fire stocks, bump firing, binary triggers, burst fire, fully automatic firearms and similar devices are NOT allowed.

6.9.5. Target stands must be placed against the berm.

6.9.6. All Shots must be taken within the range bay.

6.9.7. Never point a firearm up range or break the 180 degree rule.

6.9.8. Loaded firearms must always be pointed at the berm downrange, -or- holstered with proper safety engaged for pistols, -or- full low carry slung position with safety engaged for rifles.

6.9.9. It is the range user's responsibility to set up all target stands in a manner in which the rounds will hit the berm safely from the midpoint

of the berm down to the floor of the range. The rounds must NOT skip off the floor of the range nor go over the berm. The shooter is responsible for all their shots.

6.9.10. Empty chamber indicator flags are required on this range.

6.9.11. Range users must never handle a firearm when someone is down range.

6.9.12. Range users must clean up brass and trash and place these items in the appropriate containers.

6.10. **Range 11 Pistol Bay** is a pistol caliber only range designed for practice, casual use, tactical training for members and their guests and for board approved matches and events. (*Impact berm in RED*)



- 6.10.1. Pistols, pistol caliber carbines, and rim fire firearms are authorized.
- 6.10.2. Use of holsters is authorized.
- 6.10.3. Rifle calibers are strictly prohibited.
- 6.10.4. Bump fire stocks, bump firing, binary triggers, burst fire, fully automatic firearms and similar devices are NOT allowed.
- 6.10.5. All Shots must be taken within the range bay.
- 6.10.6. Never point a firearm up range or break the 180 degree rule.
- 6.10.7. Loaded firearms must always be pointed at the berm downrange, -or- holstered with proper safety engaged for pistols, -or- full low carry slung position with safety engaged for rifles.
- 6.10.8. It is the range user's responsibility to set up all target stands in a manner in which the rounds will hit the berm safely from the midpoint of the berm down to the floor of the range. The rounds must NOT skip off the floor of the range nor go over the berm. The shooter is responsible for all their shots.

- 6.10.9. Empty chamber indicator flags are required on this range.
- 6.10.10. Range users must ensure that all firearms are safe and that the range is clear before going down range.
- 6.10.11. Range users must never handle a firearm when someone is down range.
- 6.10.12. Range users must clean up brass and trash and place these items in the appropriate containers.

6.11. **Range 12 Pistol Bay** is a pistol caliber range designed for practice, casual use, tactical training for members and their guests and for board approved matches and events. *(Impact berm in RED)*



- 6.11.1. Pistols, pistol caliber carbines, and rim fire firearms are authorized.
- 6.11.2. Use of holsters is authorized.
- 6.11.3. Rifle calibers are strictly prohibited.
- 6.11.4. Bump fire stocks, bump firing, binary triggers, burst fire, fully automatic firearms and similar devices are NOT allowed.
- 6.11.5. Target stands must be placed so that the rounds fired will strike mid berm.
- 6.11.6. All Shots must be taken from in front of angled white safety line between the white safety marker poles.
- 6.11.7. No shooting from under shade structure.
- 6.11.8. Range users must never point a firearm up range or break the 180 degree rule.



- 6.11.9. Loaded firearms must always be pointed at the berm downrange, -or- holstered with proper safety engaged for pistols, -or- full low carry slung position with safety engaged for rifles.
- 6.11.10. It is the range user's responsibility to set up all target stands in a manner in which the rounds will hit the berm safely from the midpoint of the berm down to the floor of the range. The rounds must NOT skip off the floor of the range nor go over the berm. The shooter is responsible for all their shots.
- 6.11.11. Shooting steel is only authorized during board approved matches.
- 6.11.12. Empty chamber indicator flags are required on this range for uncased firearms.
- 6.11.13. Range users must ensure that all firearms are safe and that the range is clear before going down range.
- 6.11.14. Range users must never handle a firearm when someone is down range.
- 6.11.15. Range users must return all target stands and props to their appropriate locations.
- 6.11.16. Range users must clean up brass and trash and place these items in the appropriate containers.

6.12. **The 200 Yard Rifle Range** is a special use rifle only range designed for members and guests to shoot the maximum distance at Pima Pistol Club. This range is only available on published dates.

*(Impact berm in RED)*



- 6.12.1. Coordinate with Range Safety Officer to close and lock gates.
- 6.12.2. Inspect each side bay to ensure there are no range users in the area.
- 6.12.3. Range users must ensure that the Red “Range is Hot” flag at the gate is hoisted.
- 6.12.4. Range users must ensure that the “Range is Hot” sign at the firing position is displayed.
- 6.12.5. Range users must coordinate with all other range users prior to going down range.
- 6.12.6. 50 Caliber BMG and larger calibers are strictly prohibited.
- 6.12.7. Rapid fire is strictly prohibited.
- 6.12.8. Bump fire stocks, bump firing, binary triggers, burst fire, fully automatic firearms and similar devices are NOT allowed.
- 6.12.9. Slinging rifles in a tactical style is strictly prohibited.

- 6.12.10. It is the range user's responsibility to set up all target stands in a manner in which the rounds will hit the berm safely from the midpoint of the berm down to the floor of the range. The rounds must NOT skip off the floor of the range nor go over the berm. The shooter is responsible for all their shots.
- 6.12.11. Targets are to be placed at the berm.
- 6.12.12. Standing, sitting and prone positions are authorized.
- 6.12.13. Cold range procedures from section 5.0 are to be utilized.
- 6.12.14. Range users are responsible for cleaning up their shooting area to include brass being placed in brass barrels, trash being placed in trash cans and Shotgun shells being disposed of.

## 7. RANGE USEAGE QUICK REFERENCE

### RANGE 1 - PUBLIC PISTOL RANGE

- YES** Pistols, chamber flags required
- NO** Holsters or holster draws, rapid fire, pistol caliber carbines rifles, rifle caliber pistols, shotguns, angled targets, restricted firearm types (*see 6.1.11*), steel targets

### RANGE 2 - PUBLIC RIFLE RANGE

- YES** Rifles with shoulder stocks, pistol caliber rifles or carbines with shoulder stocks, shotguns with shoulder stocks(*see 6.2.5, 6.2.13, 6.2.14*), chamber flags required
- NO** Pistols (*see 6.2.6*), rapid fire, angled targets, restricted firearm types (*see 6.1.11*), steel targets, tactical sling use, calibers 50 BMG and larger, pistol grip only rifles or pistol grip only shotguns (*see 6.2.5*)

### RANGES 3 & 4 - TACTICAL RANGES

- YES** Rifles, pistols, shotguns, pistol caliber carbines, holster use, tactical slings, PPC steel with pistols
- NO** Restricted firearm types (*see 6.1.11*), calibers 50 BMG and larger, breaking 180!

## RANGES 5A, 5B, & 5C - PISTOL RANGES

**YES** Pistols, pistol caliber carbines and rifles, rim fire firearms, holster use, tactical slings

**NO** Shotguns, rifle calibers, steel targets (*see 6.4.11*), restricted firearm types (*see 6.1.11*), calibers 50 BMG and larger, breaking 180!

## RANGES 5D - RIFLE/PISTOL RANGE

**YES** Pistols, rifles, shotguns, holster use, tactical slings, PCC steel with pistols

**NO** Restricted firearm types (*see 6.1.11*), calibers 50 BMG and larger, breaking 180!

## RANGES 6 & 8 - RIFLE/PISTOL COMPETITION ONLY RANGES

**YES** Pistols, rifles, shotguns, holster use, tactical slings, PCC steel with pistols

**NO** Non credentialed members or guests, restricted firearm types (*see 6.1.11*), calibers 50 BMG and larger, breaking 180!

## RANGES 9 - RIFLE/PISTOL RANGE

**YES** Pistols, rifles, shotguns, holster use, tactical slings, PCC steel with pistols

**NO** Restricted firearm types (*see 6.1.11*), calibers 50 BMG and larger, breaking 180!

## RANGES 10, 11, & 12 - PISTOL RANGES

- YES** Pistols, pistol caliber carbines and rifles, rim fire firearms, holster use, tactical slings
- NO** Restricted firearm types (*see 6.1.11*), rifle calibers, steel targets (*see 6.4.11*), calibers 50 BMG and larger, breaking 180!

